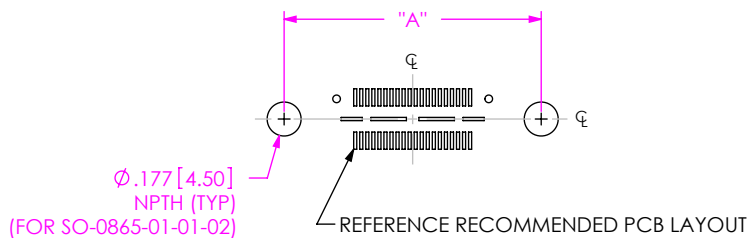


DO NOT  
SCALE FROM  
THIS PRINT

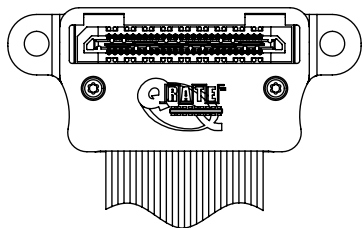
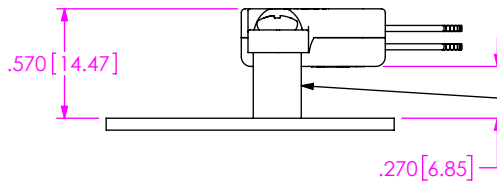
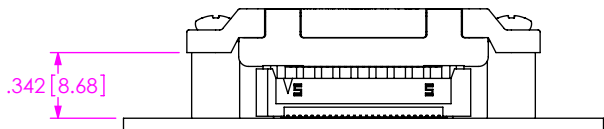
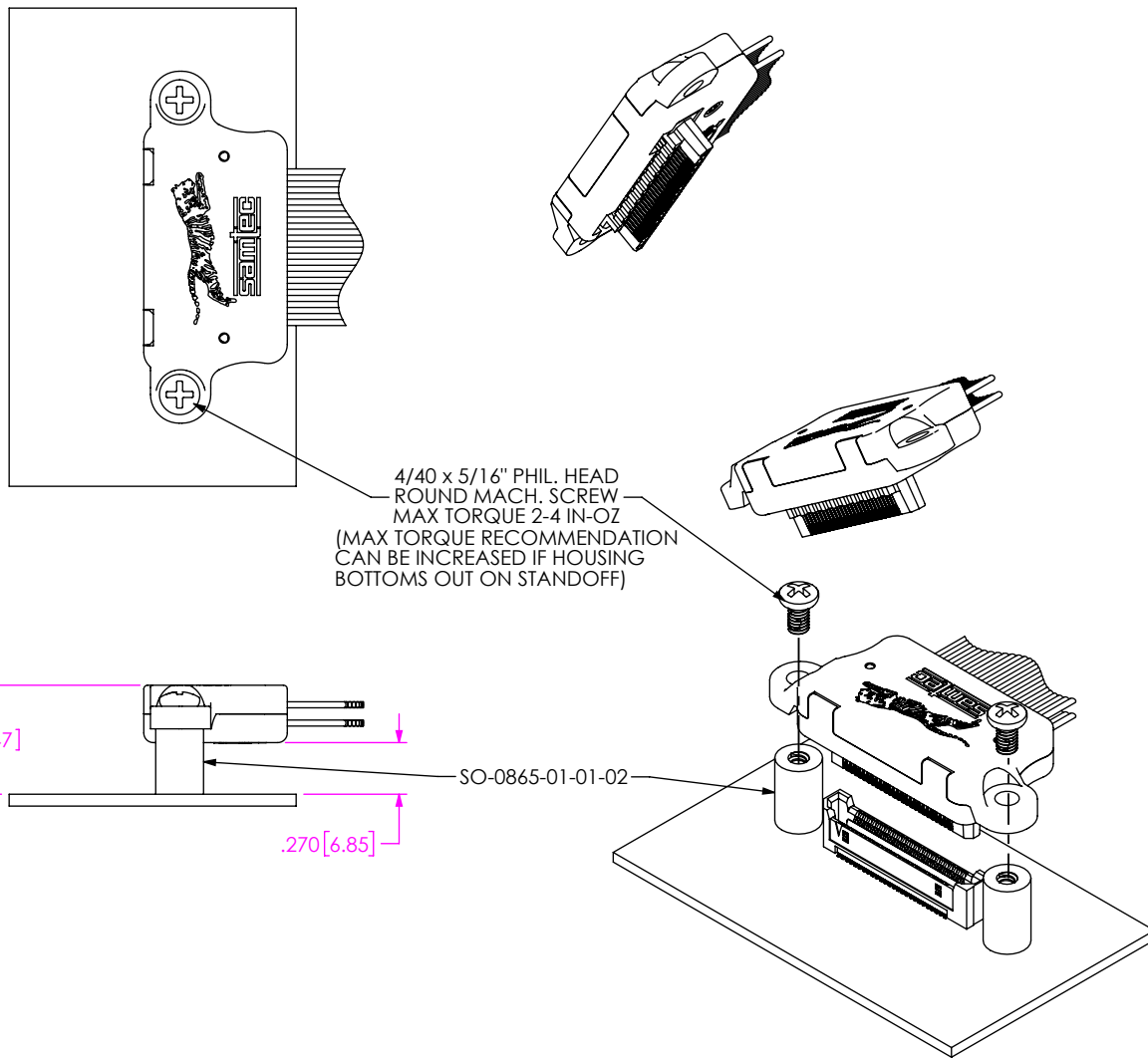
RECOMMENDED LAYOUT FOR -DV SCREW DOWN OPTIONS  
( $\phi$ .177[4.50] HOLES CENTERED ON QXR8 LAYOUT)



EQRD	EQRP	"A"
No. OF POSITIONS	No. OF POSITIONS	
-026	-018	1.540 [39.12]
-052	-036	2.516 [63.91]
-078	-054	3.492 [88.72]

EQRX-DV WITH ANY SCREW-DOWN OPTION

NOTE: ALL DIMENSIONS ARE FOR REFERENCE ONLY



NOTE:  
THE PEM NUT AND MACHINE SCREW SPECIFIED ON THIS PRINT WILL WORK FOR THIS APPLICATION; HOWEVER, THE CUSTOMER IS FREE TO USE OTHER HARDWARE ACCEPTABLE TO THEM AS MOST OF THIS IS COMMODITY. (www.pemnet.com)

**PROPRIETARY NOTE**  
THIS DOCUMENT CONTAINS CONFIDENTIAL AND PROPRIETARY INFORMATION AND ALL DESIGN, MANUFACTURING, REPRODUCTION, USE, PATENT RIGHTS AND SALES RIGHTS ARE EXPRESSLY RESERVED BY SAMTEC, INC. THIS DOCUMENT SHALL NOT BE DISCLOSED, IN WHOLE OR PART, TO ANY UNAUTHORIZED PERSON OR ENTITY NOR REPRODUCED, TRANSFERRED OR INCORPORATED IN ANY OTHER PROJECT IN ANY MANNER WITHOUT THE EXPRESS WRITTEN CONSENT OF SAMTEC, INC.



520 PARK EAST BLVD, NEW ALBANY, IN 47150  
PHONE: 812-944-6733 FAX: 812-948-5047  
e-Mail: info@SAMTEC.com code: 55322

DO NOT SCALE DRAWING  
SHEET SCALE: 1:1

DESCRIPTION:  
EQRX WITH SCREW-DOWN OPTIONS

DWG. NO.  
EQRX APPLICATIONS

BY: ANDREW C 03/17/2010 SHEET 1 OF 1